

Platinum Lace Front



Platinum Lace Front



Platinum Lace Front



Platinum Lace Front



PLF006HM **NEW**

All Hand-Tied

This long **non-permanent curly style** is relaxed at the crown with feminine and fabulous curls toward the bottom. Wear down and casual during the day and swept up into a glamorous hairdo for evening fun. Our human hair is of premium quality and our impeccable lace front construction offers a natural appearing hairline and off the face flexibility.

Spring Honey



To Maximize the Curls and Longevity Of Your Curly Style Wig, Use the Services of Expert Wig Stylist at a Professional Wig Salon.



PLF007HM **NEW**

All Hand-Tied

Sweeping along the shoulders, this long gorgeous **non-permanent curly style** offers limitless possibilities. Beautiful human hair and a natural and flawless lace front hair line for comfort and confidence. From that upscale lunch to that night on the town, this lovely and sophisticated look does it all!

Medium Shade Blonde



To Maximize the Curls and Longevity Of Your Curly Style Wig, Use the Services of Expert Wig Stylist at a Professional Wig Salon.



PLF008HM **NEW**

All Hand-Tied

This mid-length contemporary style features soft **non-permanent curly style** with bangs that offer a feminine appeal that is so pretty and natural. A total youthful look complimenting our versatile lace front construction. The finest human hair for that soft, beautiful and healthy appearance.

Ginger Blonde Twist(Root)



To Maximize the Curls and Longevity Of Your Curly Style Wig, Use the Services of Expert Wig Stylist at a Professional Wig Salon.



PLF009HM **NEW**

All Hand-Tied

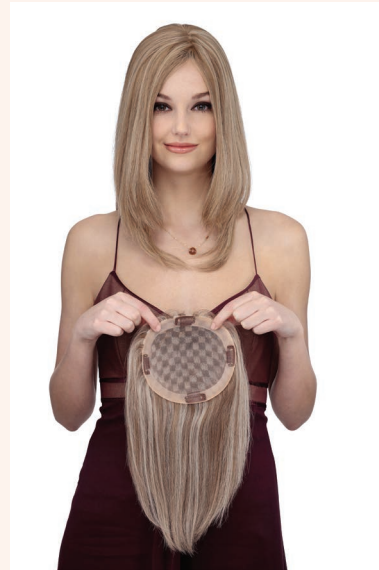
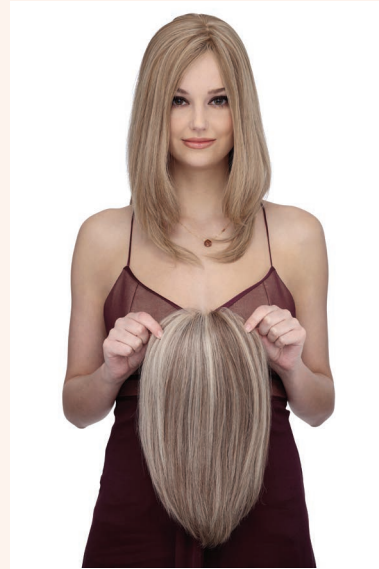
This cute and classic bob with sweeping bangs and face framing style has limitless versatility, natural movement and comfort. Together with the finest human hair and our premium lace front natural appearance, your busy day and evening plans will be filled with endless happenings.

Cafe Latte



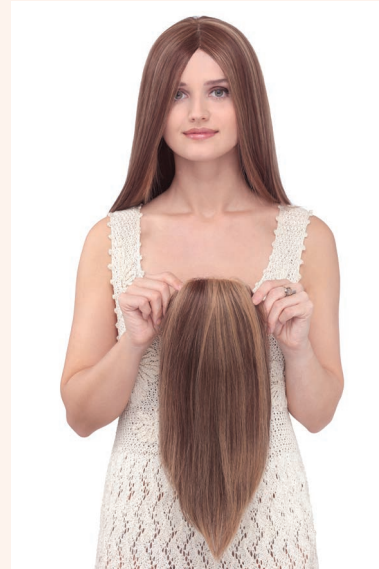
To Maximize the Curls and Longevity Of Your Curly Style Wig, Use the Services of Expert Wig Stylist at a Professional Wig Salon.

TOPPIECE®



TP4003 NEW
Mono top in round shape with 4 clips.
Base: 7" X 6"
Length: 10"
Super Top
Sunny Blonde Brown

TOPPIECE®



TP4004 NEW
Mono top in round shape with 4 clips.
Base: 7" X 6"
Length: 12"
Super Top
Marble Brown Frosted

Wig Stand & Care Products



Color Rings



Human Hair



Synthetic Hair

Louis Ferre HUMAN HAIR 2015 COLLECTION



Platinum Lace Front
TOPPIECE®

Louis Ferre®, Toppiece®, Monosystem® and Illusion Front® are registered trademark of Louis Ferre, Inc.© 2015 Louis Ferre, Inc.